

# HEALING WITH A BEAM OF LIGHT

## DEEP IMPACT POWER



**Increases Blood Circulation and Strengthens the Cardiovascular System:** As your body increases sweat production to cool itself, your heart works harder pumping blood at a greater rate to boost circulation.

**Improved Skin:** The profuse sweating achieved after just a few minutes on the <sup>TM</sup>BIOMAT<sub>mx</sub> carries off deeply imbedded impurities and dead skin cells, leaving the skin glowing and immaculately clean. Increased circulation draws your skin's own natural nutrients to the surface.

**Burns Calories and Controls Weight:** As you relax in the gentle heat of the <sup>TM</sup>BIOMAT<sub>mx</sub>, your body is actually hard at work, producing sweat, pumping blood and burning calories. According to a Journal of the American Medical Association report, in a single Infrared Ray sauna session, you may burn as many calories as you would rowing or jogging for 30 minutes. So you lose weight-not just water.

**Improves the Immune System:** Far Infrared Ray's deep heat raises your body temperature, inducing an artificial fever. As it works to combat the fever, your body's immune system is strengthened. Combined with the elimination of

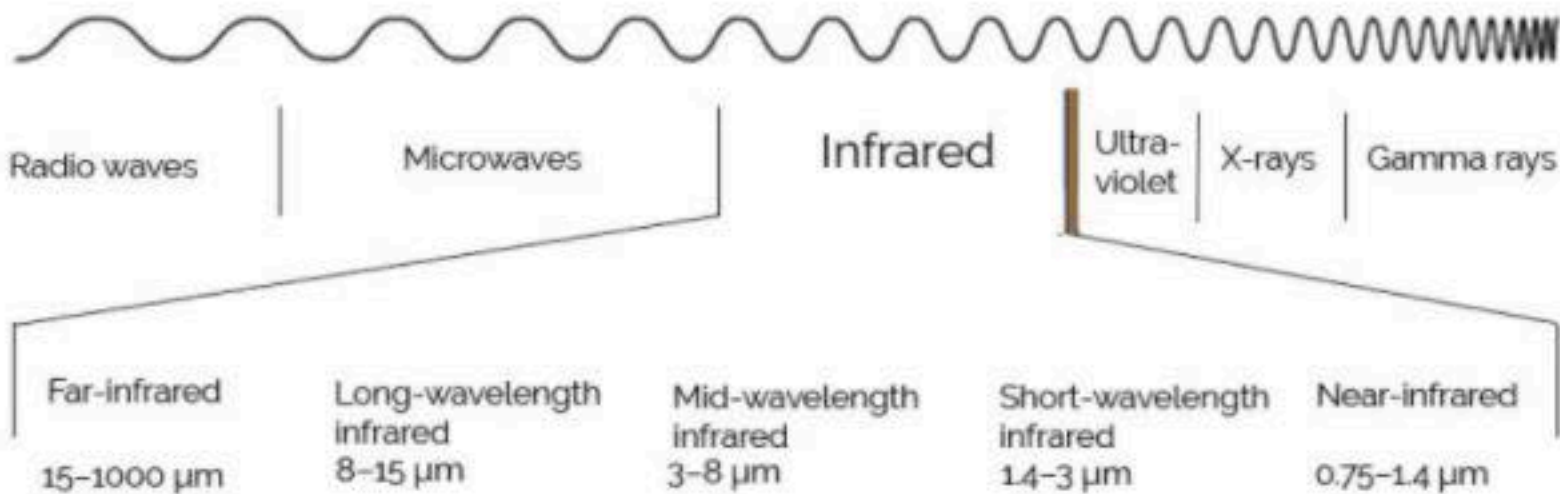
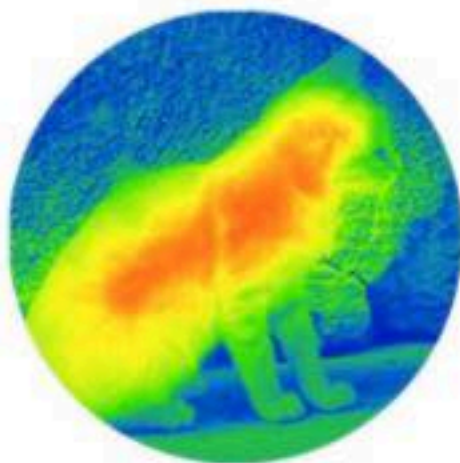
toxins and waste produced by the intense sweating, your overall health and resistance to disease is increased.

**Reduces Stress and Fatigue:** The gentle warmth of your Amethyst <sup>TM</sup>BIOMAT<sub>mx</sub> gives you an overall massaging effect, soothing jangled nerves and knotted muscles. You'll feel rejuvenated and renewed, restored in both body and mind.

**Removes Toxins:** Increased blood circulation stimulates the sweat glands, releasing built-up toxins and waste. Daily sweating can help detoxify your body as it rids itself of an accumulation of potentially carcinogenic heavy metals, as well as alcohol, nicotine, sodium, sulfuric acid and cholesterol.

**Relieves pain:** The deep heat of your Amethyst <sup>TM</sup>BIOMAT<sub>mx</sub> helps peripheral blood vessels dilate, bringing relief and healing to muscles and soft tissue injuries. Increased blood circulation carries off metabolic waste products and delivers oxygen-rich blood to oxygen-depleted muscles, so they recover faster.

# What is infrared?

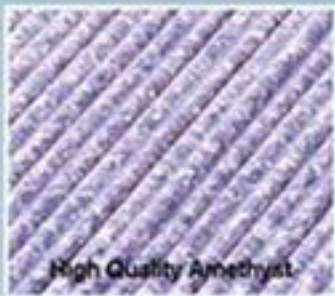




# MANAGING YOUR HEALTH CARE

RICHWAY IS COMMITTED TO THE ENHANCEMENT AND DEVELOPMENT OF THE HUMAN POTENTIAL

## HIGH QUALITY AMETHYST



The world's best source of Amethyst is in Korea. Amethyst crystals are most famous for its power to detoxify the body from alcohol and other harmful elements.

Amethyst also produces Far Infrared Rays. These Far Infrared Rays (FIR)

revitalize biological functions of cells to help promote blood circulation and perspiration, provide relief from neuralgia, backaches and arthritis, and eliminate toxins. Far Infrared Rays provide relaxation, antibacterial functions and purification of the air.

## A LIFE GIVING ENERGY : NEGATIVE IONS



Revolutionary Discoveries! How Negative Ion Therapy can help people: If 600 to 1000 volts of negative potential is applied to an insulated body, more calcium and sodium minerals in the circulating blood get ionized, thus changing an acidified

body to an alkaline body. Although it uses a high voltage, since there are no current flows present, there are no risks or dangers. This invention is sometimes called a static electric treatment device or high potential treatment device. It's effects stretch out to and are effective for stiff shoulders, headaches, insomnia, and chronic constipation. It works for allergy patients; however, it is advised to consult a physician before using the product.

## THE FUNCTION OF NEGATIVE IONS



Purifying blood, reviving cells, improving the immune system, controlling the autonomic nervous system, the vitalization of cell metabolism, relief from pain and symptoms of paralysis.

**RICHWAY LIFE WITH A BIOMAT**





# Richway Amethyst Biomat™ FIR

therapy can be used in many places:

- At home to improve quality of sleep and overnight regeneration and rejuvenation.
- Chiropractic Doctor's office..
- Physiotherapy or Orthopedic Doctor's Office .
- Hospitals - recovery room, diabetic ward etc.
- Rehab and Wellness Centers.
- Detoxification Centers.
- Spas - Acupuncture and Massage Therapy Centers .
- Cold climate places with a lack of sunlight and fresh air. (air conditioned offices with no windows, North Dakota etc.)

## **RICHWAY & FUJI BIO INC.**

1314 South King Street Suite 520,  
Honolulu, HI 96814  
Tel: (808) 589-2800  
Toll-Free: 1-855-338-6410  
Fax: (808) 597-1651  
www.richwayandfujibio.com



# **3 YEAR LIMITED WARRANTY**

(Effective for purchases made from September 1, 2015)



**Products Covered: Biomat 7000MX, Biobelt 7000MX, Amethyst Pillow, Quantum Energy Pad, Quantum Energy Comforter, Alkal-Life 7000SL, Rejuvena 7000**

Richway & Fuji Bio warrants the covered product to be free from defects and malfunctions at the time sold. "Defects" as used in this warranty, is defined as imperfections which impair or impede the function and use of the product.

## **How Long the Warranty Lasts**

This warranty lasts 3 years from the date of delivery. This warranty extends to the original purchaser only. Coverage terminates if you sell or otherwise transfer ownership.

## **What This Warranty Covers**

- ▶ **Biomat / Biobelt / Amethyst Pillow:** This warranty covers any defects or malfunctions in the electronic components, heating element, top cover replacement, pillow (stone) wrap replacement and carry case.
- ▶ **Quantum Energy Pad / Quantum Energy Comforter:** This warranty covers any defects or malfunctions in the microfiber cover, internal cushion, comforter, and pillow case.
- ▶ **Alkal-Life:** This warranty covers any defects or malfunctions in the main unit and accompanying parts.
- ▶ **Rejuvena:** This warranty covers any defects or malfunctions in the main unit, adapter, and USB charger.

If Richway & Fuji Bio determines that such goods are defective, within the period of this warranty, Richway & Fuji Bio will repair or replace the parts free of charge for the first year. Repair or replacement for the second and third year requires a fee, which can be found on our website. Repair or replacement is the sole and exclusive remedy available to the buyer, and shall constitute the fulfillment of all Richway & Fuji Bio obligations in respect to the goods furnished under this agreement.

## **What This Warranty Does Not Cover**

This warranty does not cover abuse, misuse, natural disaster, insufficient or excessive electrical supply, ordinary wear, fading, failure to follow instructions and improper maintenance. Richway & Fuji Bio shall not be liable for any incidental or consequential damages as a direct result of negligence or misuse. This warranty does not extend to the purchase of opened, used, repaired, repackaged, and/or resealed products, including but not limited to sales of such products on internet auction sites and/or sales of such products by surplus or bulk resellers. Any and all warranties or guarantees shall immediately cease and terminate as to any products or parts thereof which are repaired, replaced, altered, or modified, without the prior express and written consent of Richway & Fuji Bio.



## How to Get Service

To obtain service under this warranty, contact Customer Service at 808-589-2800 / 855-338-6410 (toll-free) or [rma@richwayusa.com](mailto:rma@richwayusa.com) and provide the purchaser's name, RI (Richway Invoice) number, and a detailed description of the problem you are experiencing. They will provide you with a return merchandise authorization number (RMA). This number is required and must be placed in a visible area on the front of the package. Ship your product postage paid, include a copy of the original sales slip, credit card receipt or other proof of the date of the original retail purchase. If servicing within the first two (2) months, we will send you a prepaid shipping label to cover your shipping costs. If servicing from the third month and on, the customer is responsible for shipping costs to return the product for repair or replacement. We will cover the shipping costs to return the product back to the customer.

### Return addresses:

#### Richway & Fuji Bio Inc.

1314 S. King St., Suite 520,  
Honolulu, HI 96814

Tel: 808-589-2800 Toll-Free: 855-338-6410 (USA, Canada, Guam, Saipan)

Fax: 808-597-1651

#### R&L Co., Ltd.

11F, Ace Gwangmyeong Tower B, 108 Haan-Ro, Gwangmyeong-Si,  
Gyeonggi-Do, Korea 14319

Tel: 02-6112-7700 Fax: 02-6112-7749

## How Do State Laws Apply

This warranty gives you specific legal rights, and you may also have other rights which vary from state to state. Any implied warranties last the duration of this warranty. Some states do not allow limitations on how long an implied warranty lasts and some states do not allow the exclusion or limitation of incidental or consequential damages, so the limitations or exclusions may not apply to you.

## TRADE-IN POLICY

Trade in your old Richway & Fuji Bio products and apply a credit towards your new purchase.

### How it Works

The amount of credit you will receive is 30% of the original purchase price of your trade-in item towards one of equal or greater value OR 30% off a lesser value item. The credit will be deducted from the purchase price of the new item plus shipping. Credit from one trade-in item may be applied to the purchase of one new item only. You cannot use more than one trade-in item to receive a greater discount on a new item.

For more information, please visit our website ([www.richwayandfujibio.com](http://www.richwayandfujibio.com)).



**RICHWAY & FUJI BIO INC.** 1314 SOUTH KING STREET SUITE 520, HONOLULU, HI 96814 USA

TEL: (808) 589-2800 TOLL-FREE: (855) 338-6410 FAX: (808) 597-1651 [WWW.RICHWAYANDFUJIBIO.COM](http://WWW.RICHWAYANDFUJIBIO.COM)

**SHAOXING RICHWAY TRADING CO., LTD.** 20F, NO. 1488, BUILDING #2, MODERN MANSION, XINGYUE ROAD, KEQIAO DISTRICT,  
SHAOXING CITY, ZHEJIANG, P.R. CHINA 312030

**RICHWAY EUROPE B.V.** BEECHAVENUE 54-80, 1119 PW SCHIPHOL-RIJK, NETHERLANDS TEL: +31-(0)20-658-6231 FAX: +31-(0)20-658-6142

**RICHWAY & LIFE JAPAN CORP.** 2-6-41 NAKAHATA, ONOJO-SHI, FUKUOKA, JAPAN 816-0921 TEL:+81-92-575-1004 FAX: +81-92-575-1006

**R&L CORPORATION** 11F, ACE GWANGMYEONG TOWER B, 108 HAAN-RO, GWANGMYEONG-SI, GYEONGGI-DO, KOREA 14319

TEL : +82-2-6112-7700 FAX : +82-2-6112-7749 [WWW.RICHWAYKOREA.COM](http://WWW.RICHWAYKOREA.COM)

**THE LIFE CO., LTD.** A-C32 (30F), 606, SEOBUSAET-GIL, (DAESUNG D-POLIS, GASAN-DONG) GEUMCHEON-GU, SEOUL, KOREA 08504

TEL : +82-2-2183-0355 FAX : +82-2-2183-0356

\* Richway & Fuji Bio Inc. reserves the right to change any of the terms and conditions contained in this Warranty and Policy, at any time and in its sole discretion. Any changes will be effective immediately upon posting of the revisions on the Site. You are responsible for reviewing the notice and any applicable changes. Changes may be posted without notice to you.